

H.J.Rigel: Quartett op10 Nr.6

Arr. E.Huckert

Fagott

Allegro



7



15



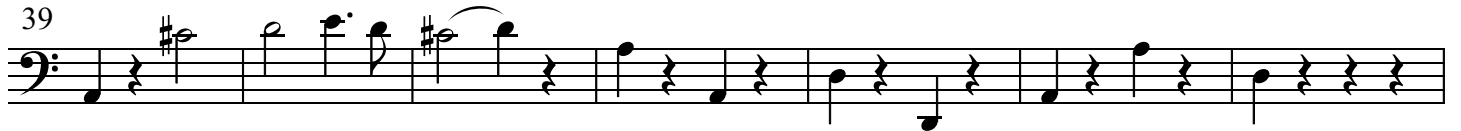
26



33



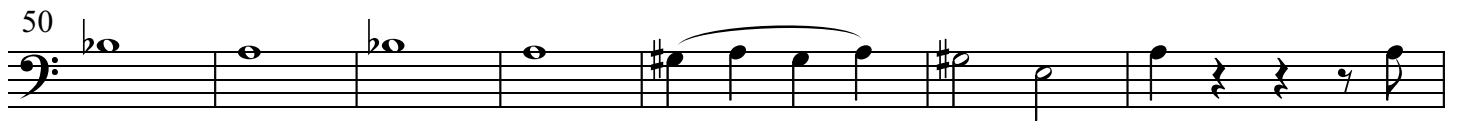
39



46



50



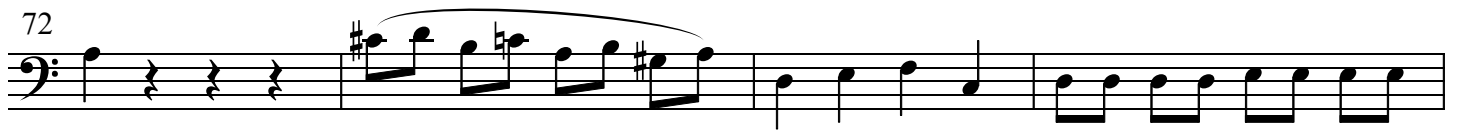
57



63



72



76



H.J.Rigel: Quartett op10 Nr.6

Arr. E.Huckert

83 Siciliano

83 Siciliano



Musical notation for measures 83-88 of the Siciliano section. The piece is in 6/8 time and features a melodic line in the bass clef with various rhythmic patterns including eighth and sixteenth notes.

89

89



Musical notation for measures 89-95 of the Siciliano section. The melody continues with similar rhythmic motifs, including some rests.

96

96



Musical notation for measures 96-101 of the Siciliano section. This section includes more complex rhythmic patterns with slurs and accents.

102

102



Musical notation for measures 102-108 of the Siciliano section. The melody features a series of eighth notes followed by a half note.

109

109



Musical notation for measures 109-113 of the Siciliano section. The piece concludes with a final cadence.

V1.2 EH

Gracioso

114

114



Musical notation for measures 114-123 of the Gracioso section. The piece is in 3/4 time and features a melodic line in the bass clef.

124

124



Musical notation for measures 124-131 of the Gracioso section. The melody continues with a mix of eighth and quarter notes.

132

132



Musical notation for measures 132-143 of the Gracioso section. This section includes a key signature change to two sharps (F# and C#).

144

144



Musical notation for measures 144-151 of the Gracioso section. The melody features a series of eighth notes.

152

152



Musical notation for measures 152-159 of the Gracioso section. The melody continues with a mix of eighth and quarter notes.

160

160



Musical notation for measures 160-166 of the Gracioso section. This section includes a key signature change to three sharps (F#, C#, and G#).

167

167



Musical notation for measures 167-173 of the Gracioso section. The piece concludes with a final cadence.

H.J.Rigel: Quartett op10 Nr.6

Arr. E.Huckert

177

Musical notation for measures 177-181 in bass clef, key of D major. The sequence begins with a quarter rest, followed by a quarter note D4, a quarter note E4, a quarter note F#4, and a quarter note G4. This is followed by a quarter note A4, a quarter note B4, a quarter note C5, and a quarter note D5. The next measure contains a quarter note E5, a quarter note D5, a quarter note C5, and a quarter note B4. The following measure has a quarter note A4, a quarter note G4, a quarter note F#4, and a quarter note E4. The final measure consists of a quarter note D4, a quarter note C4, a quarter note B3, and a quarter note A3, ending with a double bar line.

182

Musical notation for measures 182-192 in bass clef, key of D major. The sequence begins with a quarter note D4, a quarter note E4, a quarter note F#4, and a quarter note G4. This is followed by a quarter note A4, a quarter note B4, a quarter note C5, and a quarter note D5. The next measure contains a quarter note E5, a quarter note D5, a quarter note C5, and a quarter note B4. The following measure has a quarter note A4, a quarter note G4, a quarter note F#4, and a quarter note E4. The next measure consists of a quarter note D4, a quarter note C4, a quarter note B3, and a quarter note A3. This is followed by a quarter note G3, a quarter note F#3, a quarter note E3, and a quarter note D3. The sequence continues with a quarter note C3, a quarter note B2, a quarter note A2, and a quarter note G2. The final measure consists of a quarter note F#2, a quarter note E2, a quarter note D2, and a quarter note C2, ending with a double bar line.

193

Musical notation for measures 193-200 in bass clef, key of D major. The sequence begins with a quarter note D4, a quarter note E4, a quarter note F#4, and a quarter note G4. This is followed by a quarter note A4, a quarter note B4, a quarter note C5, and a quarter note D5. The next measure contains a quarter note E5, a quarter note D5, a quarter note C5, and a quarter note B4. The following measure has a quarter note A4, a quarter note G4, a quarter note F#4, and a quarter note E4. The next measure consists of a quarter note D4, a quarter note C4, a quarter note B3, and a quarter note A3. This is followed by a quarter note G3, a quarter note F#3, a quarter note E3, and a quarter note D3. The sequence continues with a quarter note C3, a quarter note B2, a quarter note A2, and a quarter note G2. The final measure consists of a quarter note F#2, a quarter note E2, a quarter note D2, and a quarter note C2, ending with a double bar line.

201

Musical notation for measures 201-208 in bass clef, key of D major. The sequence begins with a quarter note D4, a quarter note E4, a quarter note F#4, and a quarter note G4. This is followed by a quarter note A4, a quarter note B4, a quarter note C5, and a quarter note D5. The next measure contains a quarter note E5, a quarter note D5, a quarter note C5, and a quarter note B4. The following measure has a quarter note A4, a quarter note G4, a quarter note F#4, and a quarter note E4. The next measure consists of a quarter note D4, a quarter note C4, a quarter note B3, and a quarter note A3. This is followed by a quarter note G3, a quarter note F#3, a quarter note E3, and a quarter note D3. The sequence continues with a quarter note C3, a quarter note B2, a quarter note A2, and a quarter note G2. The final measure consists of a quarter note F#2, a quarter note E2, a quarter note D2, and a quarter note C2, ending with a double bar line.

V1.2 EH